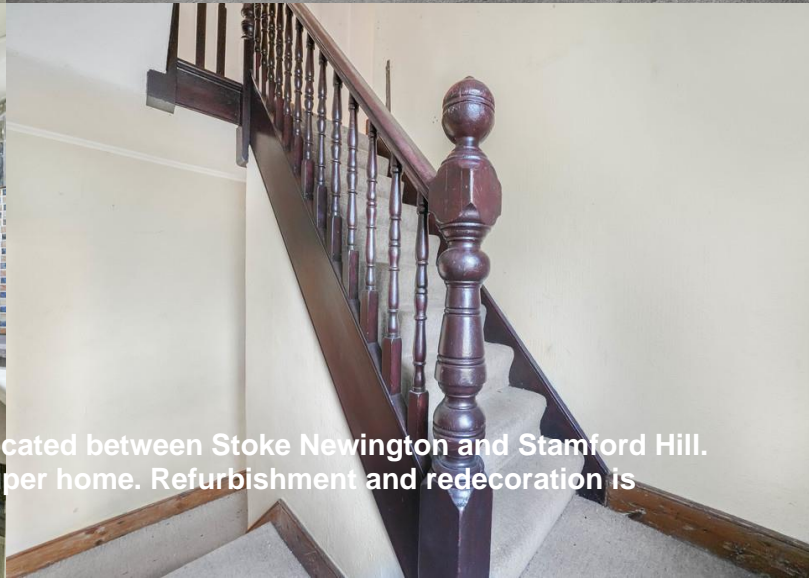


Julian Reid



56 Oldhill Street, London, N16 6NA
Flat fronted, late Victorian semi-detached house located between Stoke Newington and Stamford Hill.
The house presents a 'blank canvas' to create a super home. Refurbishment and redecoration is required

Guide Price £695,000
Freehold

- **3 Bedrooms**
- **Council Tax Band: D**
- **EPC Rating: E**
- **2 Reception rooms**
- **Work required**

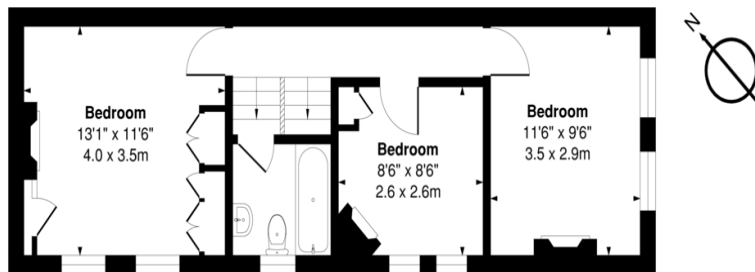
Flat and double fronted late Victorian house, with good living space, three bedrooms, bathroom, small kitchen, downstairs cloakroom and patio garden. The property requires redecoration and refurbishment although all windows have been replace with double glazed wooden sash and there is gas central heating. The house is located directly off the Upper Clapton Road, so moments from excellent bus routes into the City and West End and a short stroll from the open green spaces of Springfield Park. Stoke Newington overground station and the vibrant selection of shops, bars and restaurants of this interesting area of London are also close by. The house is offered chain Free



Julian Reid
 51 Stoke Newington Church Street London N16 0AR
 jreid@julianreid.co.uk Fax: 020 7923 8651
 +44 (0) 20 7923 8650

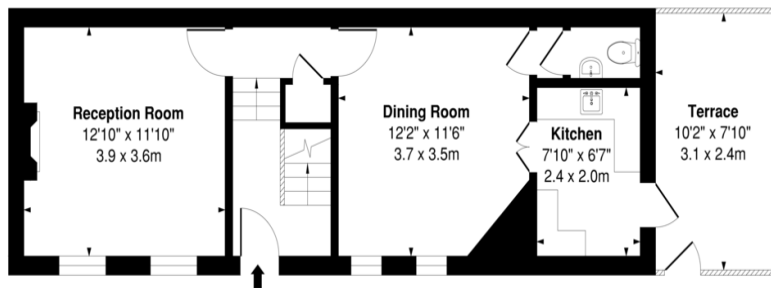
Oldhill Street, N16

Approx. Gross Internal Area 926 Sq Ft - 86.04 Sq M



First Floor

Floor Area 463 Sq Ft - 43.02 Sq M



Ground Floor

Floor Area 463 Sq Ft - 43.02 Sq M



Measured according to RICS IPMS2. Floor plan is for illustrative purposes only and is not to scale. Every attempt has been made to ensure accuracy of the floorplan shown, however all measurements, fixtures, fittings and data shown are an approximate interpretation for illustrative purposes only. 1 sq m = 10.76 sq feet.
 ipaplus.com

Important notice: Julian Reid, their clients and any joint agents give notice that: 1: They are not authorized to make or give representations or warranties in relation to the property either here or elsewhere, either on their own behalf or on behalf of the client or otherwise. They assume no responsibility for any statement that may be made in these particulars. These particulars do not form part of any offer or contract and must not be relied upon as statements or representations of fact. 2: Any areas, measurements or distances are approximate. The text, photographs and plans are for guidance only and are not necessarily comprehensive. It should not be assumed that the property has all necessary planning, building regulation and other consents and Julian Reid have not tested any services, equipment or facilities. Purchasers must satisfy themselves by inspection or otherwise.



J352 Ravensworth 01670 713330